



THE UNIVERSITY OF KANSAS

CANCER CENTER

**Presented by Chancellor Douglas A. Girod
January 18, 2024**

A close-up photograph of two hands clasped together in a supportive grip, with a blue overlay and the text "Overview of the KU Cancer Center". The hands are positioned in the center of the frame, with the fingers interlaced. The skin appears slightly wrinkled, suggesting an older individual. The background is blurred, showing what appears to be a white hospital gown or bedsheet. The overall tone is somber and supportive, with a blue color cast over the entire image.

Overview of the KU Cancer Center

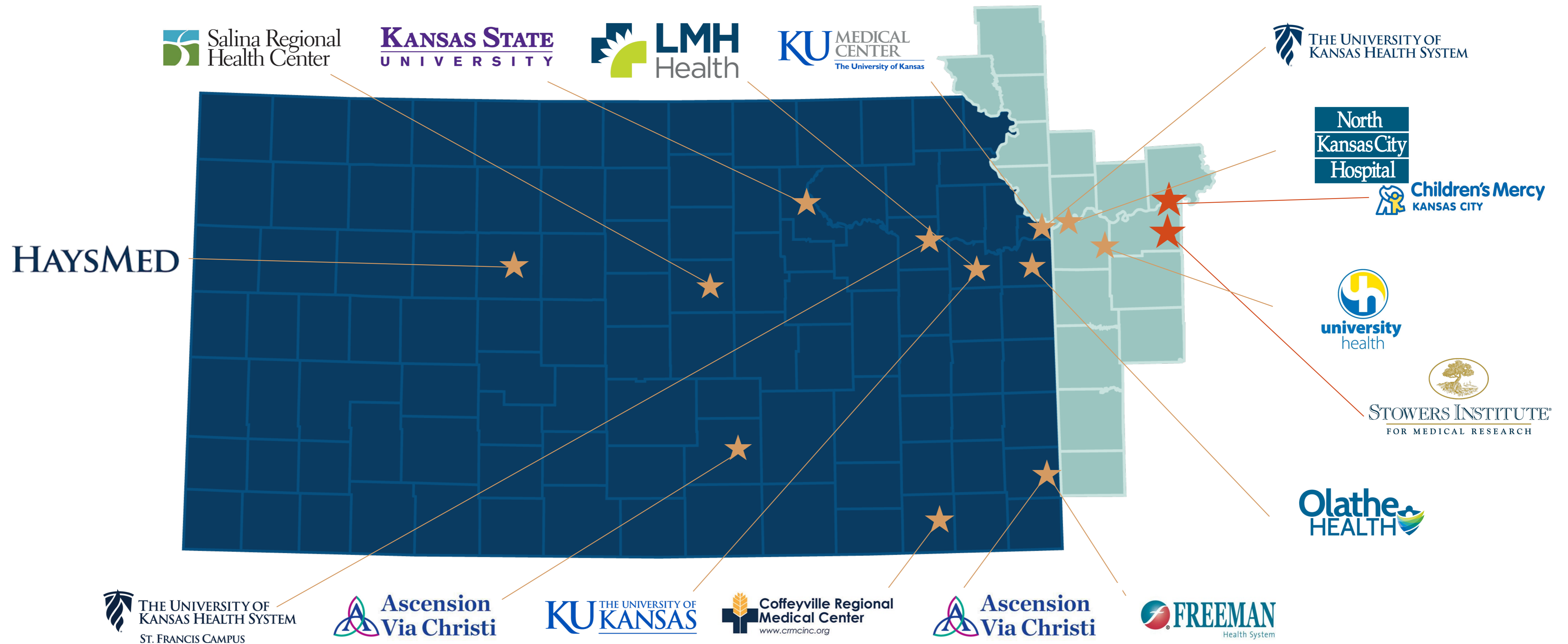
Overview of the KU Cancer Center

The basics

- Only NCI-designated “comprehensive” cancer center in the region, and one of only 56 in the nation
- 350 cancer researchers and clinicians
- 150 disease-specific oncologists
- 13 locations across the Kansas City metro
- Telemedicine outreach across Kansas
- Partnerships with organizations across Kansas and Missouri

Overview of the KU Cancer Center

Regional partners



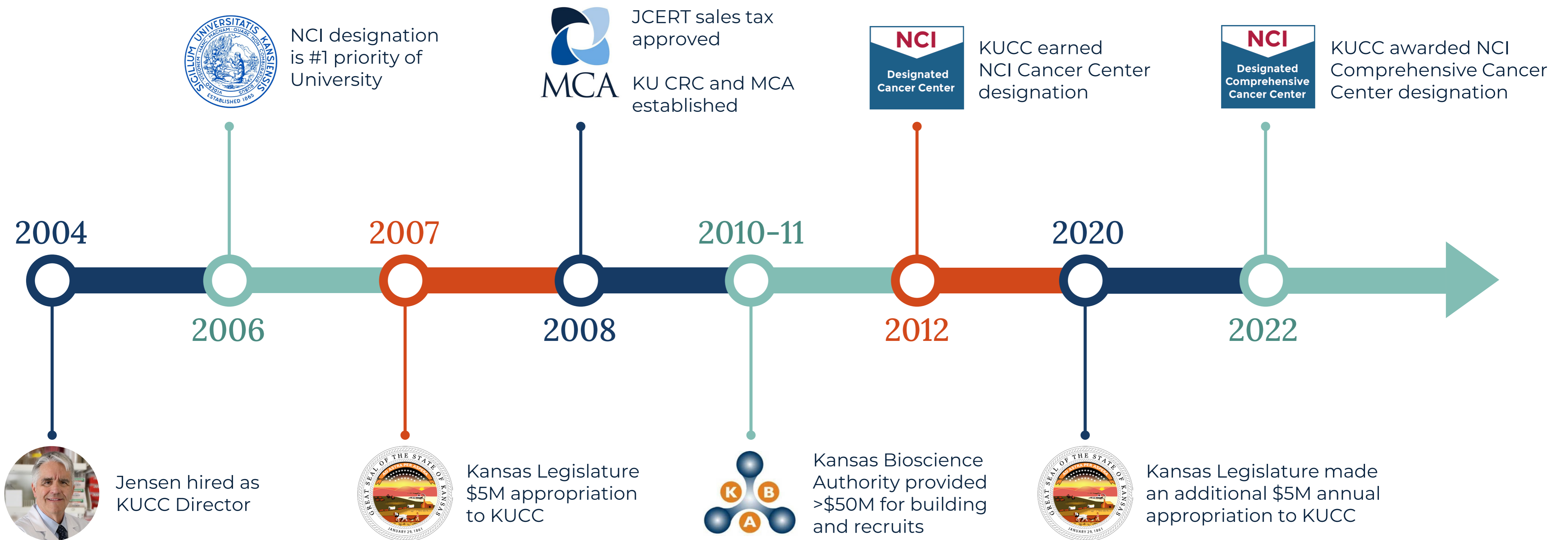
Overview of the KU Cancer Center

NCI “comprehensive” designation

- Comprehensive is the highest designation and the gold standard for care, awarded to only 1% of centers nationally.
- For patients, NCI designation means the best possible care – i.e. a 25% higher survival rate than at non-NCI centers.
- For Kansas, NCI designation means tremendous economic benefit through research grants and healthcare expenditures

Overview of the KU Cancer Center

The Kansas Legislature has been a key partner



Overview of the KU Cancer Center

Economic Benefit

Research dollars

- \$50 million in research annually
- \$520 million in federal research dollars awarded from 2007-2022
- 58% growth in NIH funding from FY15-FY23

Recruitment and retention of patients

- Before NCI designation, 15% of Kansans left KS for treatment. It's now 7%.
- Central location offers accessibility to out-of-state patients.

Recruitment and retention of top doctors and researchers

- Top doctors lead to better patient outcomes
- Top researchers win competitive federal grants.

\$2.5B

Economic impact
of KU Cancer Center
from 2007-2022

A close-up photograph of two hands clasped together in a supportive grip. The hands are positioned in the center of the frame, with fingers interlaced. The skin appears slightly wrinkled, suggesting an older individual. The background is a soft, out-of-focus light blue. A semi-transparent blue overlay covers the entire image, and the text "Cancer in our society" is centered in white serif font.

Cancer in our society

Cancer in our society

The stark reality

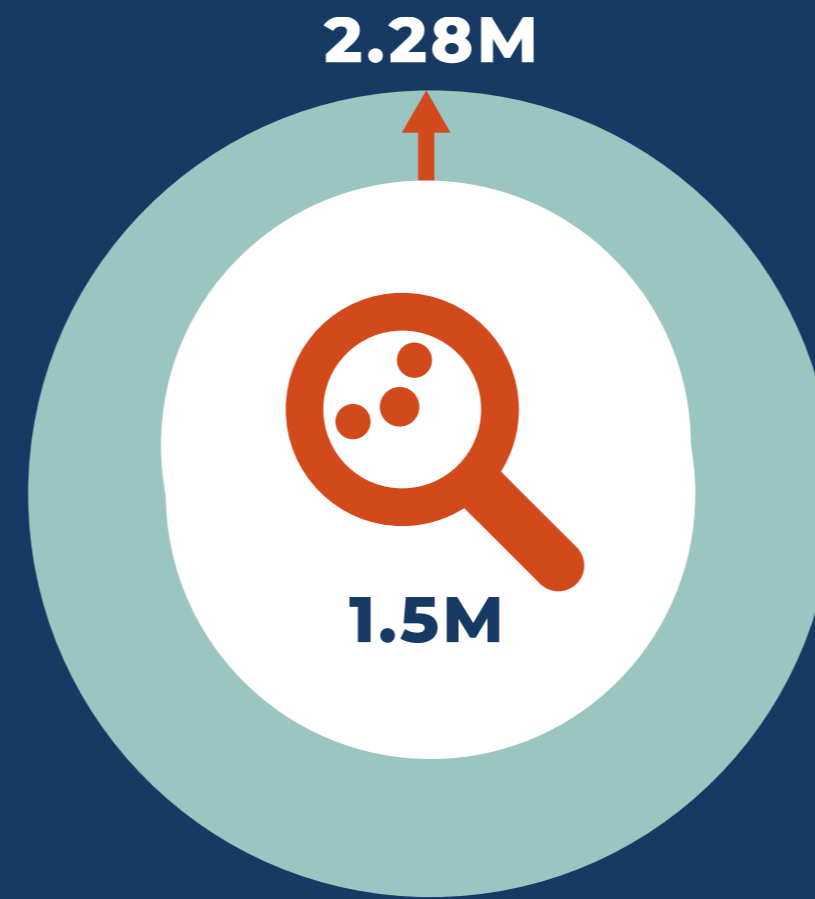
Three out of 10 patients
diagnosed with cancer today
will be dead in five years.

Cancer in our society

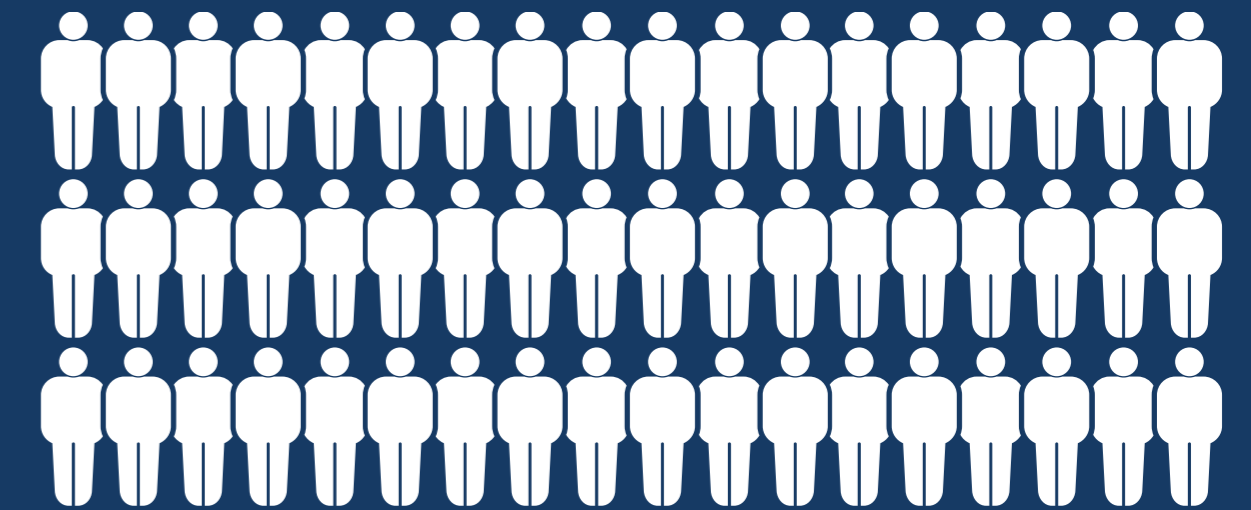
The stark reality



Currently,
**1 in 2 men and
1 in 3 women**
will be diagnosed with
cancer in their lives



The number of
cancer diagnoses are
**predicted to
increase 49%,**
from 1.5M in 2015 to
2.28M in 2050



America's 65-and-over
population will nearly
double over the next
three decades,
**from 48 million
to 88 million**



The KU Cancer Center's vision
for the future

The KU Cancer Center's vision

We can lead a new approach to cancer

TO SAVE MORE LIVES, WE NEED...

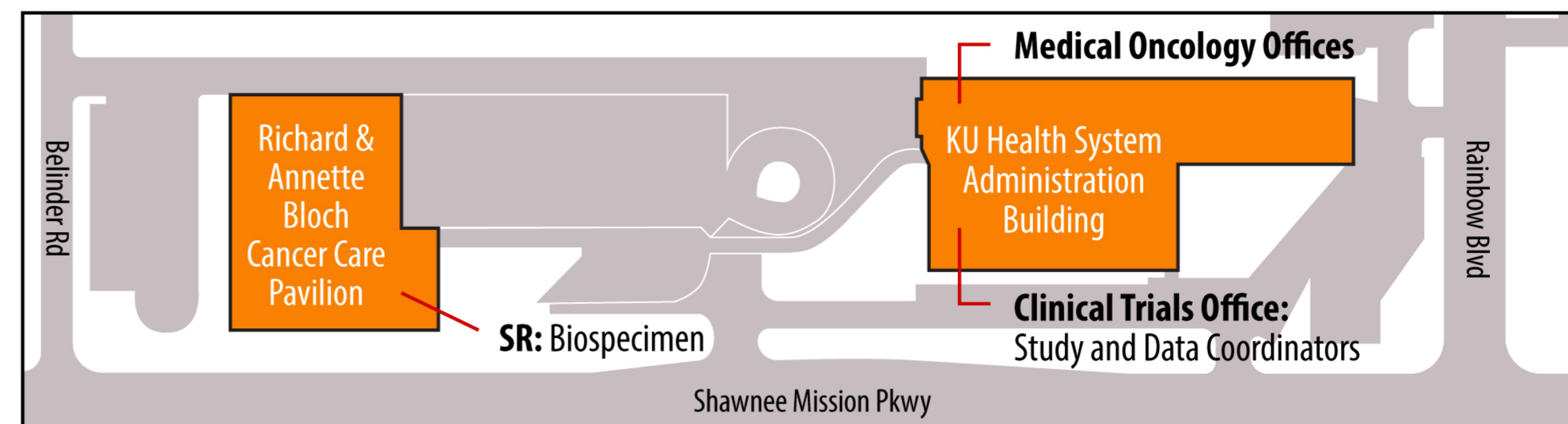
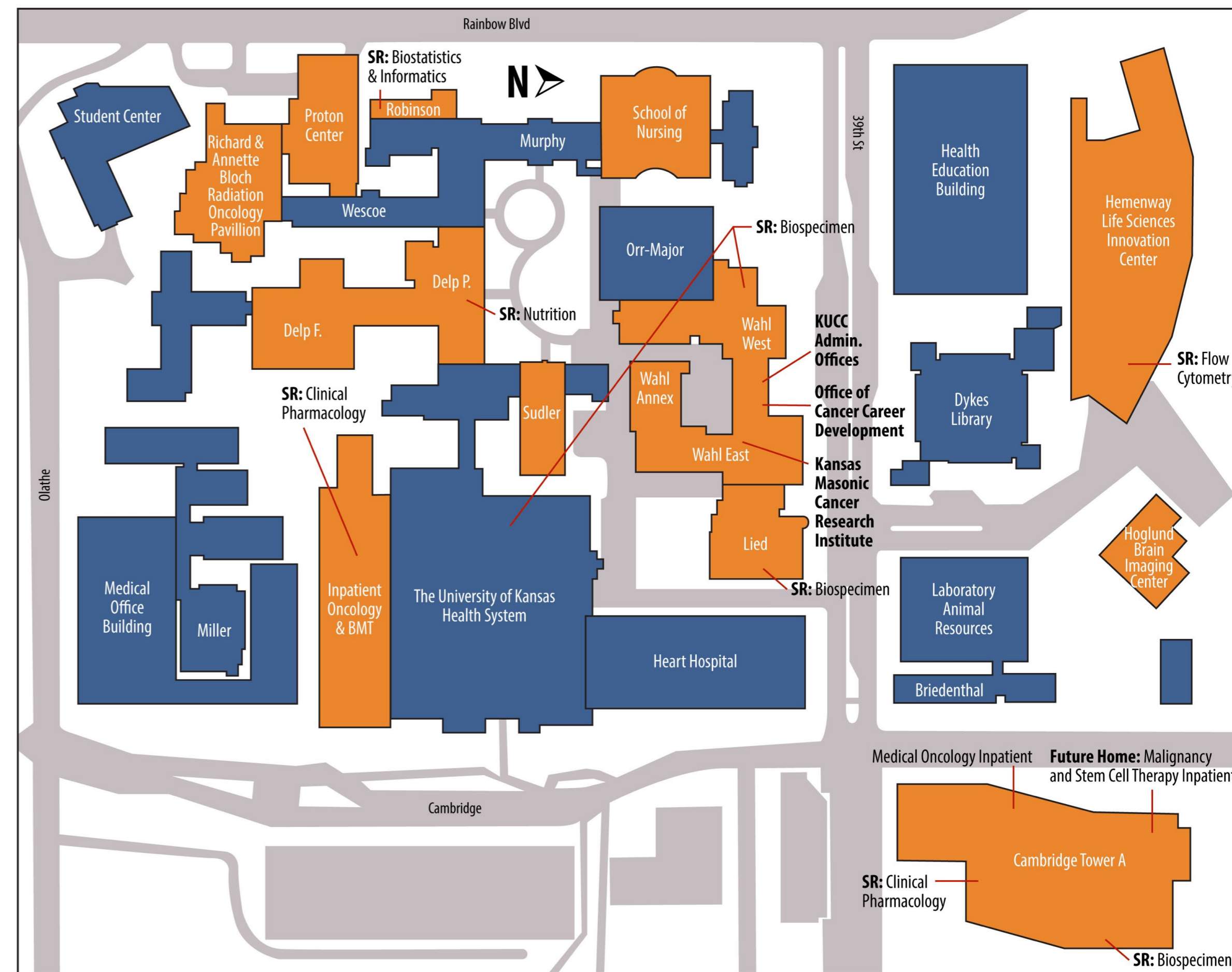
- **redefine** the way we prevent, diagnose and treat cancer;
- **translate** scientific breakthroughs into new treatments faster and more efficiently;
- **advance** precision medicine, personalized cancer care, and survivorship care.

TO DO THIS, WE NEED...

- **a new facility** that enhances capacity and brings together geographically fragmented researchers and clinicians

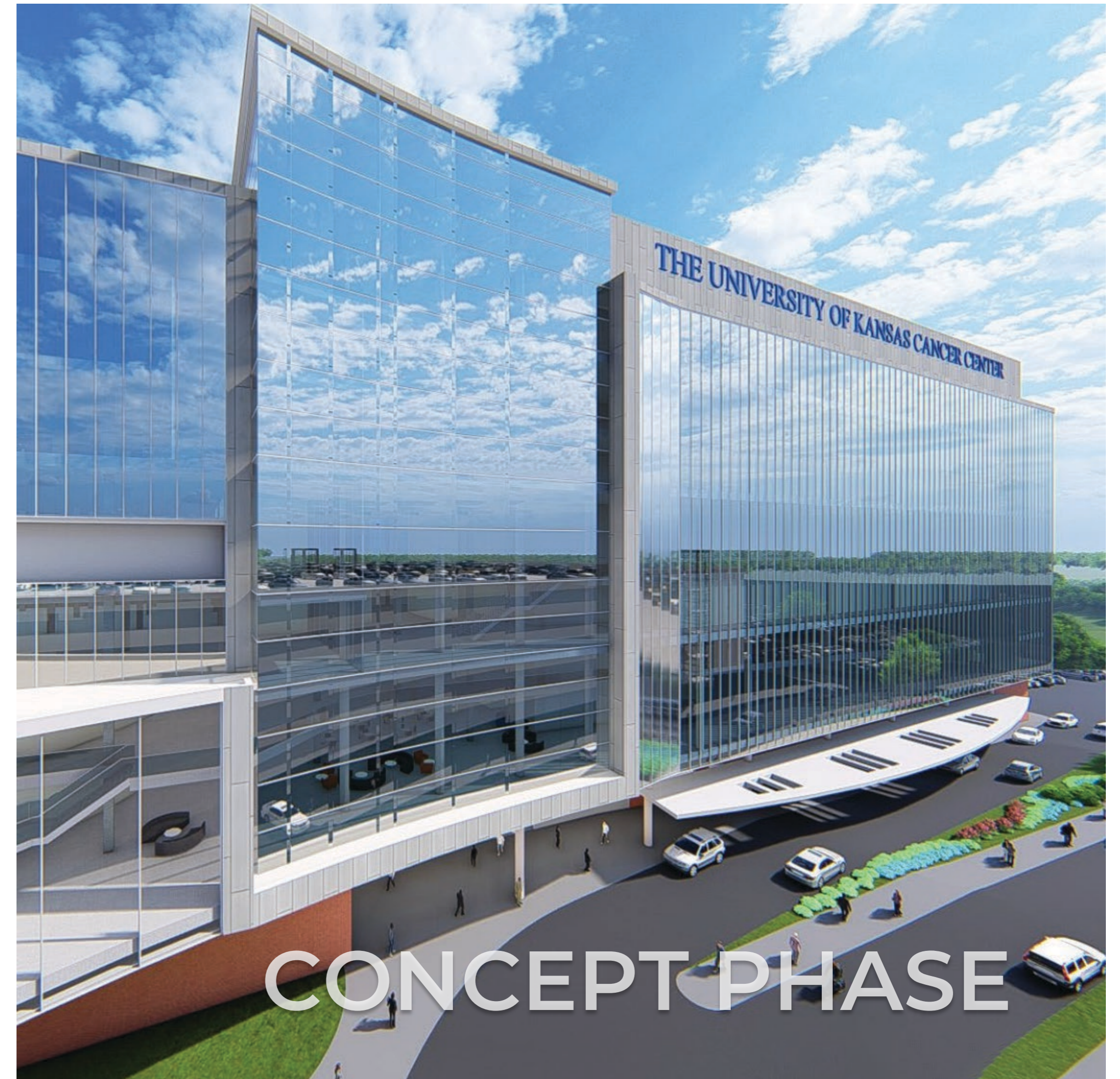
We have overcome our geographic fragmentation as best we can.

But we can't progress further without a new facility that brings together doctors, researchers and patients.



A new facility enables us to:

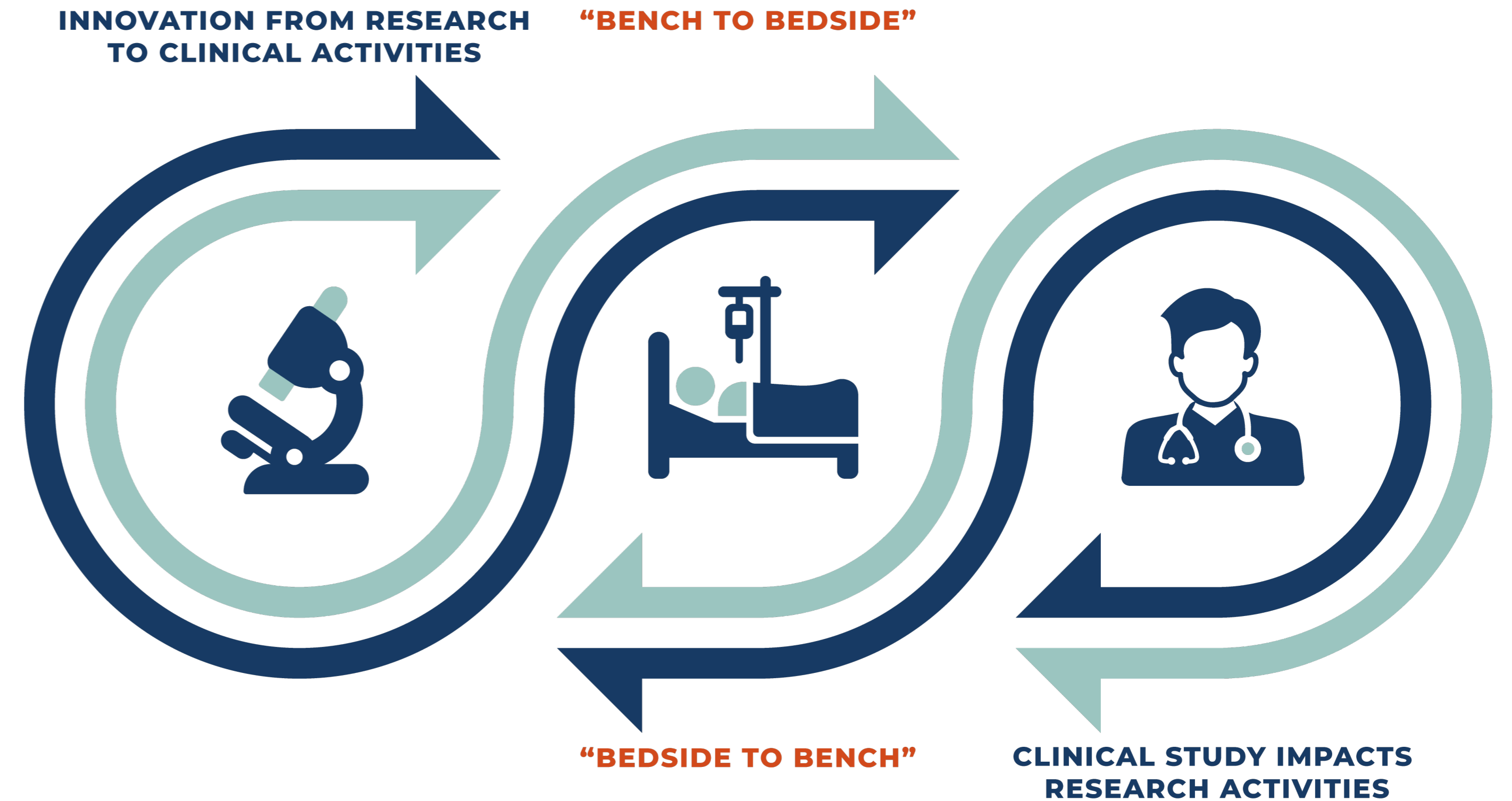
- Increase lab space to recruit new researchers
- Create research neighborhoods to increase collaboration between clinicians and researcher, accelerating discovery
- Grow research in cutting-edge therapies such as CAR-T, immunotherapy, proton therapy, and advanced surgical interventions
- Increase clinical trials
- Create coordination and collaboration on patient care to provide a whole patient experience in one location
- Reduce time to move new cures from bench to bedside
- Improve competitiveness for NIH funding



CONCEPT PHASE

In summary, a new facility enables us to bring research discoveries to the patient bedside.

- Puts the patient at the center of our work
- Enables continuous interaction and enrichment between research and clinical development activities



A close-up photograph of two hands clasped together in a supportive grip. The hands are positioned centrally, with fingers interlaced. The background is a soft, out-of-focus light blue and white, suggesting a clinical or hospital setting. The overall tone is warm and caring.

Thank you

THE UNIVERSITY OF KANSAS
CANCER CENTER

TESTIMONIAL

Darren McLaughlin

- Diagnosed with aggressive stage IV type of lymphoma
- Out of standard treatment options
- Eligible for a new CAR T-cell therapy called Yescarta
- KU Cancer Center was a study site for Yescarta
- Darren was out of treatment options. Today, he is in complete remission.

TESTIMONIAL

CiCi Rojas

- Prominent civic and business leader in the Latino community.
- Diagnosed with an aggressive lymphoma in 2017, it was taking over her whole body.
- After 6 rounds of chemotherapy, it appeared to be gone. A few months later it returned.
- Qualified for a clinical trial for CAR T therapy.
- After 30 days, she was cancer free!

